

www.wnsoilfield.com
405-677-7222

Table of Contents

WNS Lowery-Wellheads	5
Type L-K Tubing Head	6
Type L-R Tubing Head	8
Type L-92 Casing Head	10
Type L-HFC-W Tubing Head.....	12
Type L-HB Tubing Head	14
Type L-A7 Tubing Head	16
Type L-SO Tubing Head.....	18
Type L-HHS Tubing Head	20
Type L-CE Casing Head	22
Type L-ECA Casing Head	24
Type L-MC Casing Head	26
Type L-CJ Casing Head	28
Type L-MS Tubing Head	30
Type L-SW Tubing Head	32
Type L-S Tubing Head	34
Type L-HW Tubing Head	36
Type L-MSR Casing Head	38
WNS Lowery-Wellhead Accessories and Flanges	40
Slip Joint Belled Nipples.....	41
Fittings.....	42
Casing Supports.....	43
Flanges	44
Threaded Flanges.....	47
Seating Nipples	48



Wellheads

Wellhead Color Code

- Green Larkin
- Red Huber
- Blue Hinderlighter

100% Interchangeable

TYPE L-K TUBING HEAD

1,500 PSI Working Pressure

L-SK TUBING HEAD WITH STRIPPER RUBBER

- 1,500 PSI working pressure
- Adapter with O-Ring: 25.4 Lbs
- Stripper Rubber available for all sizes
- Stripper Rubbers are not designed to withstand full pressure rating.

FEATURES:

- Seamless steel Body
- Full opening bore on all sizes
- Hinged Slips with Snap Ring
- Stripper Rubber available
- Male or Female bottom connections available



HEAD COMPLETE			
Bottom Connection (Inches)	4 ½ 8RD	5 ½ 8RD	7 8RD
Bore	Full	Full	Full
Suspended String (Inches)	2 ¾, 2 ¾	2 ¾, 2 ¾	2 ¾, 2 ¾
Max Slip Load Rating (lbs)	65,000	65,000	65,000
Cap Thread (Inches)	7 ¾ 8RD API MOD	7 ¾ 8RD API MOD	7 ¾ 8RD API MOD
Cap Material	Ductile Iron	Ductile Iron	Ductile Iron
Body Material	Carbon Steel	Carbon Steel	Carbon Steel
Height (Inches)	12	12	12
Weight (lbs)	86	85	92
Packing Rubber OD	6.845	6.845	6.845



TOP CAP [A]

L-K Tubing Head	Part Number	QTY
	30710	1



TOP PLATE [B]

L-K Tubing Head	Part Number	QTY
2 3/4"	30715	1
2 7/8"	30716	1



PACKING RUBBER [C]

L-K Tubing Head	Part Number	QTY
Packing Rubber 6.845 OD		
2 3/4"	30722	1
2 7/8"	30723	1



BOTTOM PLATE [D]

L-K Tubing Head	Part Number	QTY
Bottom Plate		
2 3/4"	30729	1
2 7/8"	30730	1



SLIP ASSEMBLY AND SNAP RING [E]

L-K Tubing Head	Part Number	QTY
Slip		
2 3/4"	30153410	1
2 7/8"	30153411	1



SLIP BOWL [F]

L-K Tubing Head	Part Number	QTY
Slip Bowl	30733	1



ADAPTER [G]

L-K Tubing Head	Part Number	QTY
Stripper Rubber Adapter with O-Ring	30154502	1
O-Ring	30744	1



STRIPPER RUBBER [H]

L-K Tubing Head	Part Number	QTY
1 1/2"	30747	1
2 1/8"	30747	1
2 3/8"	30748	1
2 7/8"	30749	1



BODY [I]

L-K Tubing Head	Part Number	QTY
Body		
4 1/2" 8RD Male	30150007	1
4 1/2" 8RD Female	30150262	1
5 1/2" 8RD Male	30150008	1
5 1/2" 8RD Female	30150263	1
7" 8RD Male	30150009	1
7" 8RD Female	30150264	1
7" Slip Joint	30150500	1

TYPE L-R TUBING HEAD

2,000 PSI Working Pressure

L-SR TUBING HEAD WITH STRIPPER RUBBER

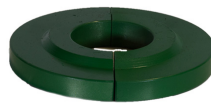
- 2,000 PSI working pressure
- Adapter with O-Ring: 47 lbs
- Stripper rubbers available for: 1 ½, 2 ¼, 2 ¾, 2 ⅞
- Stripper Rubbers are not designed to withstand full pressure rating

FEATURES:

- Seamless steel Body
- Full opening bore on all sizes
- Hinged Slips with Snap Ring
- Stripper Rubber available
- 8 ⅞ 8RD API Modified top body thread
- 3,000 PSI Model Available
- Male or Female bottom connection available



HEAD COMPLETE			
Bottom Connection	4 ½ 8RD	5 ½ 8RD	7 8RD
Bore	Full	Full	Full
Suspended String (Inches)	1 ½, 2 ¼, 2 ¾, 2 ⅞	1 ½, 2 ¼, 2 ¾, 2 ⅞, 3 ½	1 ½, 2 ¼, 2 ¾, 2 ⅞, 3 ½
Max Slip Load Rating (lbs)	85,000	85,000	85,000
Cap Thread (Inches)	8 ⅞ 8RD API MOD	8 ⅞ 8RD API MOD	8 ⅞ 8RD API MOD
Cap Material	Ductile Iron	Ductile Iron	Ductile Iron
Body Material	Carbon Steel	Carbon Steel	Carbon Steel
Height (Inches)	13	13	13
Weight (lbs)	151	148	150
Packing Rubber OD	7 ¼	7 ¼	7 ¼



TOP CAP [A]	Part Number	QTY
L-R Tubing Head	30760	1

TOP PLATE [B]		
L-R Tubing Head	Part Number	QTY
1 ½"	30763	1
2 ¼"	30764	1
2 ¾"	30765	1
2 ⅞"	30766	1
3 ½"	301915	1
2 ¾" (3000 psi L-R-3)	301070	1
2 ⅞" (3000 psi L-R-3)	301299	1
3 ½" (3000 psi L-R-3)	301985	1

PACKING RUBBER [C]		
L-R Tubing Head	Part Number	QTY
1 ½"	30771	1
2 ¼"	30152822	2
2 ¾"	30773	1
2 ⅞"	30774	1
3 ½"	30152829	2





BOTTOM PLATE [D]

L-R Tubing Head	Part Number	QTY
1 1/2"	30779	1
2 1/8"	30780	1
2 3/8"	30781	1
2 7/8"	30782	1
3 1/2"	301916	1



SLIP ASSEMBLY AND SNAP RING [E]

L-R Tubing Head	Part Number	QTY
4 1/2" 8RD		
1 1/2"	30153443	1
2 1/8"	30153444	1
2 3/8"	30153445	1
2 7/8"	30153446	1
5 1/2" 8RD		
1 1/2"	30153443	1
2 1/8"	30153444	1
2 3/8"	30153445	1
2 7/8"	30153446	1
3 1/2"	30153447	1
7" 8RD		
1 1/2"	30153443	1
2 1/8"	30153444	1
2 3/8"	30153445	1
2 7/8"	30153446	1
3 1/2"	30153447	1



SLIP BOWL [F]

L-R Tubing Head	Part Number	QTY
	30786	1



ADAPTER [G]

L-R Tubing Head	Part Number	QTY
Stripper Rubber Adapter with O-Ring	30154509	1
O Ring	3052	1



STRIPPER RUBBER [H]

L-R Tubing Head	Part Number	QTY
4 1/2" 8RD		
1 1/2"	30803	1
2 1/8"	30803	1
2 3/8"	30804	1
2 7/8"	30805	1
5 1/2" 8RD		
1 1/2"	30803	1
2 1/8"	30803	1
2 3/8"	30804	1
2 7/8"	30805	1
7" 8 RD		
1 1/2"	30803	1
2 1/8"	30803	1
2 3/8"	30804	1
2 7/8"	30805	1



BODY [I]

L-R Tubing Head	Part Number	QTY
4 1/2" 8RD Male	30150039	1
4 1/2" 8RD Female	30150276	1
5 1/2" 8RD Male	30150040	1
5 1/2" 8RD Female	30150277	1
7" 8 RD Male	30150041	1
7" 8 RD Female	30150280	1

TYPE L-92 CASING HEAD

2,000 PSI Working Pressure

FEATURES:

- Full opening bore on all sizes
- 10 3/4 8RD API Modified top thread on 8 5/8 body
- 11 3/4 8RD API Modified top thread on 9 5/8 body
- 16 8RD API Modified top thread on 13 3/8 body
- Heavy Duty hinged Slip segments with locking hinge link.
- Male, Female, or Slip Joint bottom connection available



HEAD COMPLETE			
Bottom Connection (Inches)	8 3/4 8RD	9 5/8 8RD	13 3/8 8RD
Bore	Full	Full	Full
Suspended String (Inches)	4 1/2, 5 1/2	4 1/2, 5 1/2, 7	8 3/4, 9 3/4, 10 1/4
Max Slip Load Rating (lbs)	120,000	120,000	160,000
Cap Thread (Inches)	10 3/4 8RD MOD	11 3/4 8RD MOD	16 8RD MOD
Cap Material	Ductile Iron	Ductile Iron	Steel
Body Material	Carbon Steel	Carbon Steel	Carbon Steel
Height (Inches)	12 1/2	13	16
Weight (lbs)	180	230	450



TOP CAP [A]	PART NUMBER	QTY
L-92 Casing Head 7"	301710	1
L-92 Casing Head 8 3/4"	30990	1
L-92 Casing Head 9 3/4"	301791	1
L-92 Casing Head 13 3/4"	30820	1



TOP PLATE [B]	Part Number	QTY
L-92 Casing Head 7"	301711	1
L-92 Casing Head 8 3/4"	30995	1
L-92 Casing Head 9 3/4"	30999	1
L-92 Casing Head 9 3/4"	301792	1
L-92 Casing Head 9 3/4"	301793	1
L-92 Casing Head 9 3/4"	301794	1
L-92 Casing Head 13 3/4"	30821	1
L-92 Casing Head 13 3/4"	30825	1
L-92 Casing Head 13 3/4"	30829	1



PACKING RUBBER [C]	Part Number	QTY
Packing Rubber 7 1/2" OD	30152832	2
L-92 Casing Head 8 3/4"	30152814	2
Packing Rubber 9 3/4" OD	301000	1
L-92 Casing Head 9 3/4"	301795	1
Packing Rubber 10 7/8" OD	301796	1
L-92 Casing Head 13 3/4"	301797	1
Packing Rubber 14" OD	30152816	2
Packing Rubber 14" OD	30152817	2
Packing Rubber 14" OD	30152820	2



BOTTOM PLATE [D]	Part Number	QTY
L-92 Casing Head 7"	30369	1
L-92 Casing Head 8 3/4"	30997	1
L-92 Casing Head 8 3/4"	301001	1
L-92 Casing Head 9 3/4"	301798	1
L-92 Casing Head 9 3/4"	301799	1
L-92 Casing Head 9 3/4"	301800	1
L-92 Casing Head 13 3/4"	30823	1
L-92 Casing Head 13 3/4"	30827	1
L-92 Casing Head 13 3/4"	30831	1



SLIP [E]	Part Number	QTY
L-92 Casing Head 7"	30153488	1
L-92 Casing Head 8 3/4"	30153470	1
L-92 Casing Head 8 3/4"	30153471	1
L-92 Casing Head 9 3/4"	30153491	1
L-92 Casing Head 9 3/4"	30153492	1
L-92 Casing Head 9 3/4"	30153493	1
L-92 Casing Head 13 3/4"	30153473	1
L-92 Casing Head 13 3/4"	30153474	1
L-92 Casing Head 13 3/4"	30153475	1



BODY [F]	Part Number	QTY
L-92 Casing Head 7"	30150790	1
L-92 Casing Head 8 3/4"	30150772	1
L-92 Casing Head 8 3/4"	30151021	1
L-92 Casing Head 8 3/4"	30151267	1
L-92 Casing Head 9 3/4"	30150793	1
L-92 Casing Head 9 3/4"	30151044	1
L-92 Casing Head 9 3/4"	30151274	1
L-92 Casing Head 13 3/4"	30150773	1
L-92 Casing Head 13 3/4"	30151022	1
L-92 Casing Head 13 3/4"	30151268	1

405-677-7222
 sales@wnsoilfield.com
 www.wnsoilfield.com

TYPE L-HFC-W TUBING HEAD

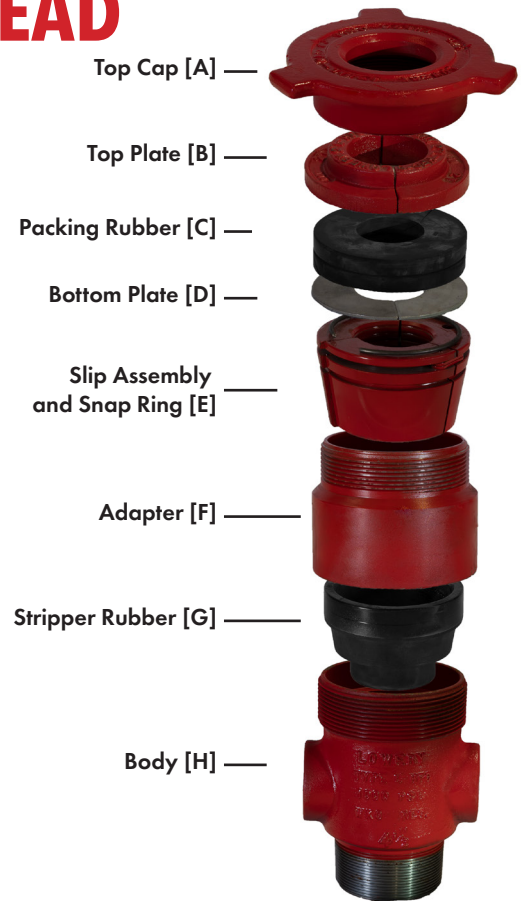
1,000 PSI Working Pressure

L-HFCS-W TUBING HEAD WITH STRIPPER RUBBER

- 1,000 PSI Working Pressure
- Adapter with O-Ring: 16.4 lbs
- Stripper Rubber: 1 ½, 2 ¼, 2 ¾
- Stripper Rubbers are not designed to withstand full pressure rating

FEATURES:

- Full opening bore on 4 ½ body
- Hinged Slips with Snap Ring
- Large diameter Top Cap with hammer lugs
- Stripper Rubber available
- Male or Female bottom connection available



HEAD COMPLETE			
Bottom Connection (Inches)	4 ½ 8RD	5 ½ 8RD	7 8RD
Bore (Inches)	Full	4	4
Suspended String (Inches)	1 ½, 2 ¼, 2 ¾, 2 ¾	1 ½, 2 ¼, 2 ¾, 2 ¾	1 ½, 2 ¼, 2 ¾, 2 ¾
Max Slip Load Rating (lbs)	35,000	35,000	35,000
Cap Thread (Inches)	6" 6V	6" 6V	6" 6V
Cap Material	Ductile Iron	Ductile Iron	Ductile Iron
Body Material	Ductile Iron	Ductile Iron	Ductile Iron
Height (Inches)	11	11	13
Weight (lbs)	46	52	57
Packing Rubber OD	5 ½	5 ½	5 ½



TOP CAP [A]

L-HFC-W Tubing Head	Part Number	QTY
	30511	1



TOP PLATE [B]

L-HFC-W Tubing Head	Part Number	QTY
1 1/2"	3085	1
2 1/8"	3089	1
2 1/2"	3027	2
2 3/4"	3073	2



PACKING RUBBER [C]

L-HFC-W Tubing Head	Part Number	QTY
1 1/2"	3086	1
2 1/8"	3090	1
2 1/2"	3028	1
2 3/4"	3074	1



BOTTOM PLATE [D]

L-HFC-W Tubing Head	Part Number	QTY
1 1/2"	3087	1
2 1/8"	3029	1
2 1/2"	3029	1
2 3/4"	3075	1



SLIP ASSEMBLY AND SNAP RING [E]

L-HFC-W Tubing Head	Part Number	QTY
1 1/2"	30153402	1
2 1/8"	30153403	1
2 1/2"	30153404	1
2 3/4"	30153405	1



ADAPTER[F]

L-HFC-W Tubing Head	Part Number	QTY
Stripper Rubber Adapter with O-Ring	30154500	1
O-Ring	30565	1



STRIPPER RUBBER [G]

L-HFC-W Tubing Head	Part Number	QTY
1 1/2"	3011010	1
2 1/8"	3011010	1
2 1/2"	3011011	1



BODY [H]

L-HFC-W Tubing Head	Part Number	QTY
4 1/2" 8RD Male	30150000	1
4 1/2" 8RD Female	3095	1
5 1/2" 8RD Male	30150001	1
5 1/2" 8RD Female	3098	1
7" 8RD Male	30150003	1
7" 8RD Female	30101	1

TYPE L-HB TUBING HEAD

1,500 PSI Working Pressure

L-HBW TUBING HEAD WITH STRIPPER RUBBER

- 1,500 PSI working pressure
- Adapter with O-Ring: 20 lbs. (4 ½ & 5 ½ bodies)
- Adapter with O-Ring: 49.6 Lbs. (7 body)
- Stripper Rubber for 4 ½ & 5 ½ bodies: 2 ¾, 2 ⅞
- Stripper Rubber for 7 body: 2 ¾, 2 ⅞, 3 ½
- Stripper Rubbers are not designed to withstand full pressure rating

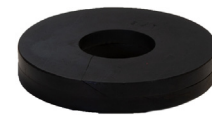
FEATURES:

- Full opening bore
- 8RD API top thread body
- Hinged Slips with Snap Ring
- Large diameter Top Cap with hammer lugs
- Stripper Rubber available
- Male or Female bottom connection available
- 3 8V side outlet option
- Mandrel option



HEAD COMPLETE

Bottom Connection (Inches)	4 ½ 8RD	5 ½ 8RD	7
Bore (Inches)	Full	Full	Full
Suspended String (Inches)	2 ¾, 2 ⅞	2 ¾, 2 ⅞	1 ½, 2 ¼, 2 ⅝, 2 ⅞, 3 ½
Max Slip Load Rating (lbs)	45,000	45,000	75,000
Cap Thread (Inches)	7 8RD	7 8RD	8 ¾ 8RD
Cap Material	Ductile Iron	Ductile Iron	Ductile Iron
Body Material	Ductile Iron	Ductile Iron	Carbon Steel
Height (Inches)	12	12	12
Weight (lbs)	65	65	125
Packing Rubber OD	6 ⅞	6 ⅞	7 ⅞



TOP CAP [A]	Part Number	QTY
L-HB Tubing Head 7"	301062	1
L-HB Tubing Head 4 ½" & 5 ½"	30105	1

TOP PLATE [B]	Part Number	QTY
L-HB Tubing Head 7"		
1 ½"	30249	1
2 ¼"	30251	1
2 ⅝"	30250	1
2 ⅞"	30252	1
3 ½"	30253	1
L-HB Tubing Head 4 ½" & 5 ½"		
2 ¾"	30166	1
2 ⅞"	30168	1

PACKING RUBBER [C]	Part Number	QTY
L-HB Tubing Head 7"		
Packing Rubber 7 ½" OD		
1 ½"	30152753	2
2 ¼"	30152763	2
2 ⅝"	30152754	2
2 ⅞"	30152755	2
3 ½"	30152756	2
L-HB Tubing Head 4 ½" & 5 ½"		
Packing Rubber 6 ⅞" OD		
2 ¾"	30152751	2
2 ⅞"	30152752	2





BOTTOM PLATE [D]

L-HB Tubing Head 7"	Part Number	QTY
1 1/2"	30263	1
2 3/8"	30265	1
2 3/4"	30264	1
2 7/8"	30266	1
3 1/2"	30267	1
L-HB Tubing Head 4 1/2" & 5 1/2"	Part Number	QTY
2 3/8"	30178	1
2 7/8"	30180	1



SLIP ASSEMBLY AND SNAP RING [E]

L-HB Tubing Head 7"	Part Number	QTY
1 1/2"	30153402	1
2 3/8"	30153403	1
2 3/4"	30153418	1
2 7/8"	30153419	1
3 1/2"	30153420	1
L-HB Tubing Head 4 1/2" & 5 1/2"	Part Number	QTY
2 3/8"	30153416	1
2 7/8"	30153417	1



SLIP BOWL [F]

L-HB Tubing Head 4 1/2" & 5 1/2"	Part Number	QTY
Slip Bowl	30112	1



STRIPPER RUBBER [G]

L-HB Tubing Head 7"	Part Number	QTY
Stripper Rubber		
7" 8R		
1 1/2"	3011018	1
2"	3011019	1
2 1/2"	3011020	1
3"	3011021	1
Stripper Rubber		
4 1/2" 8R & 5 1/2" 8R		
2 3/8"	3011015	1
2 7/8"	3011016	1



ADAPTER [H]

L-HB Tubing Head 4 1/2" & 5 1/2"	Part Number	QTY
Stripper Rubber Adapter with O-Ring	30154503	1
O-Ring	3042	1
L-HB 7"	30154504	1
O-Ring	3052	1



BODY [I]

L-HB Tubing Head 4 1/2" & 5 1/2"	Part Number	QTY
Body		
4 1/2" 8RD Male	30150010	1
4 1/2" 8RD Female	30157	1
5 1/2" 8RD Male	30150012	1
5 1/2" 8RD Male	30158	1
4 1/2" 8RD Male w/3" Outlet	30150013	1
5 1/2" 8RD Male w/3" Outlet	30150014	1
4 1/2" 8RD Female w/3" Outlet	30150265	1
5 1/2" 8RD Female w/3" Outlet	30150266	1
L-HB Tubing Head 7"	Part Number	QTY
Body		
7" 8RD Male	30150016	1
7" 8RD Female	30150267	1
7" 8RD Slip Joint	30150298	1
7" Male w/3" Outlet	30150017	1
7" Female w/3" Outlet	30150268	1
8 3/8" Male w/3" Outlet	30150050	1
8 3/8" Male w/2" Outlets	30150051	1

TYPE L-A7 TUBING HEAD

2,000 PSI Working Pressure

L-A7S TUBING HEAD WITH STRIPPER RUBBER

- 2,000 PSI working pressure
- Adapter with O-Ring: 49.6 Lbs
- Stripper Rubber for 4½, 5½ & 7 bodies: 1½, 2 ¼, 2 ¾, 2 ¾, 3 ½
- Stripper Rubbers are not designed to withstand full pressure rating

FEATURES:

- Full opening bore on all body sizes
- 8RD API top thread body
- Hinged Slips with Snap Ring
- Large diameter Top Cap with hammer lugs
- Stripper Rubber available
- Male or Female bottom connection available
- Mandrel option



HEAD COMPLETE

	4 ½ 8RD	5 ½ 8RD	7 8RD
Bottom Connection (Inches)	4 ½ 8RD	5 ½ 8RD	7 8RD
Bore (Inches)	Full	Full	Full
Suspended String (Inches)	1 ½, 2 ¼, 2 ¾, 2 ¾	1 ½, 2 ¼, 2 ¾, 2 ¾, 3 ½	1 ½, 2 ¼, 2 ¾, 2 ¾, 3 ½
Max Slip Load Rating (lbs)	85,000	85,000	85,000
Cap Thread (Inches)	8 ¾ 8RD	8 ¾ 8RD	8 ¾ 8RD
Cap Material	Ductile Iron	Ductile Iron	Ductile Iron
Body Material	Carbon Steel	Carbon Steel	Carbon Steel
Height (Inches)	13	13	13
Weight (lbs)	153	148	150
Packing Rubber OD	7 ¼	7 ¼	7 ¼



TOP CAP [A]

Part Number

QTY

Type L-A7 Tubing Head

3044

1

TOP PLATE [B]

Type L-A7 Tubing Head

Part Number

QTY

1 ½"

30249

1

2 ¼"

30251

1

2 ¾"

30250

1

2 ¾"

30252

1

3 ½"

30253

1

4"

301779

1

4 ½"

30401

1

PACKING RUBBER [C]

Type L-A7 Tubing Head

Part Number

QTY

1 ½"

30152764

2

2 ¼"

30152763

2

2 ¾"

30152754

2

2 ¾"

30152755

2

3 ½"

30152756

2

4"

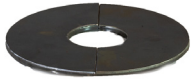
30152833

2

4 ½"

30152774

2



BOTTOM PLATE [D]

Type L-A7 Tubing Head	Part Number	QTY
1 1/2"	30263	1
2 1/8"	30265	1
2 3/8"	30264	1
2 7/8"	30266	1
3 1/2"	30267	1
4"	301781	1
4 1/2"	30369	1



SLIP ASSEMBLY AND SNAP RING [E]

Type L-A7 Tubing Head	Part Number	QTY
4 1/2" 8RD Body		
1 1/2"	30153402	1
2 1/8"	30153403	1
2 3/8"	30153418	1
2 7/8"	30153419	1
3 1/2"	30153420	1
5 1/2" 8RD Body, 7" 8RD		
1 1/2"	30153402	1
2 1/8"	30153403	1
2 3/8"	30153418	1
2 7/8"	30153419	1
3 1/2"	30153420	1
4"	30153489	1
4 1/2"	30153448	1



ADAPTER [F]

Type L-A7 Tubing Head	Part Number	QTY
Stripper Rubber adapter with O-Ring	30154507	1
O-Ring	3052	1



STRIPPER RUBBER [G]

Type L-A7 Tubing Head	Part Number	QTY
All body Sizes		
1 1/2"	3011018	1
2 1/8"	3011018	1
2 3/8"	3011019	1
2 7/8"	3011020	1
3 1/2"	3011021	1



BODY [H]

Type L-A7 Tubing Head	Part Number	QTY
4 1/2" 8RD Male	30150030	1
4 1/2" 8RD Female	30150269	1
5 1/2" 8RD Male	30150031	1
5 1/2" 8RD Female	30150270	1
7" 8RD Male	30150033	1
7" 8RD Female	30150272	1
7" Slip Joint	30150296	1
5 1/2" Slip Joint	30150505	1

TYPE L-SO TUBING HEAD

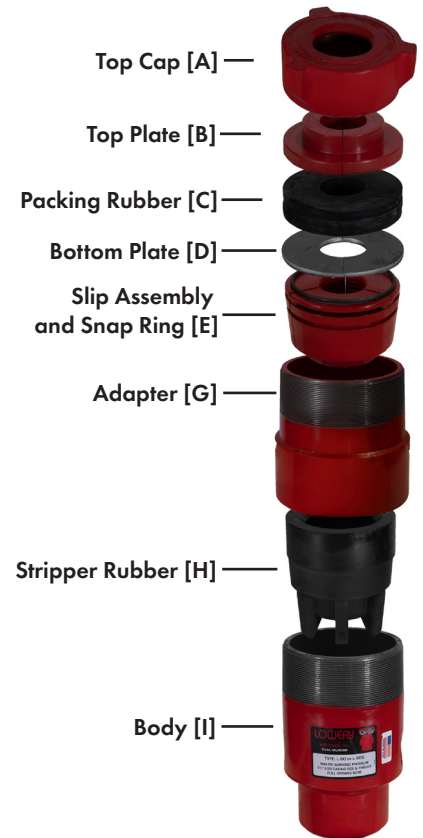
3,000 PSI Working Pressure

L-SOS TUBING HEAD WITH STRIPPER RUBBER

- 3,000 PSI working pressure
- Adapter with O-Ring: 49.6 lbs
- Stripper Rubber for all bodies: 1½, 2 ¼, 2 ¾, 2 ⅞, 3 ½
- Stripper Rubbers are not designed to withstand full pressure rating

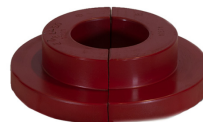
FEATURES:

- Full opening bore
- 8RD API top thread body
- Hinged Slips with Snap Ring
- Large diameter Top Cap with hammer lugs
- Stripper Rubber available
- Male or Female bottom connection available
- Mandrel Option



HEAD COMPLETE

	4 ½ 8RD	5 ½ 8RD	7 8RD
Bottom Connection (Inches)	4 ½ 8RD	5 ½ 8RD	7 8RD
Bore (Inches)	Full	Full	Full
Suspended String (Inches)	1 ½, 2 ¼, 2 ¾, 2 ⅞	1 ½, 2 ¼, 2 ¾, 2 ⅞, 3 ½	1 ½, 2 ¼, 2 ¾, 2 ⅞, 3 ½
Max Slip Load Rating (lbs)	120,000	120,000	120,000
Cap Thread (Inches)	8 ¾ 8RD	8 ¾ 8RD	8 ¾ 8RD
Cap Material	Ductile Iron	Ductile Iron	Ductile Iron
Body Material	Carbon Steel	Carbon Steel	Carbon Steel
Height (Inches)	14	14	14
Weight (lbs)	160	155	150



TOP CAP [A]

Part Number

QTY

L-SO Tubing Head

30311

1

TOP PLATE [B]

L-SO Tubing Head

Part Number

QTY

1 ½"

30394

1

2 ¼"

30395

1

2 ¾"

30396

1

2 ⅞"

30397

1

3"

30398

1

PACKING RUBBER [C]

L-SO Tubing Head

Part Number

QTY

1 ½"

30152763

3

2 ¼"

30152765

3

2 ¾"

30152766

3

2 ⅞"

30152767

3

3"

30152768

3





BOTTOM PLATE [D]

L-SO Tubing Head	Part Number	QTY
1 1/2"	30263	1
2 1/4"	30265	1
2 3/4"	30264	1
2 7/8"	30266	1
3"	30267	1



SLIP ASSEMBLY AND SNAP RING [E]

L-SO Tubing Head	Part Number	QTY
4 1/2" 8RD		
1 1/2"	30153402	1
2 1/4"	30153403	1
2 3/4"	30153418	1
2 7/8"	30153419	1
3"	30153420	1
5 1/2" 8RD		
1 1/2"	30153402	1
2 1/4"	30153403	1
2 3/4"	30153418	1
2 7/8"	30153419	1
3"	30153420	1
7" 8RD		
1 1/2"	30153402	1
2 1/4"	30153403	1
2 3/4"	30153418	1
2 7/8"	30153419	1
3 1/2"	30153420	1



ADAPTER [G]

L-SO Tubing Head	Part Number	QTY
Stripper Rubber Adapter with O-Ring	30154511	1
O-Ring	3052	1



STRIPPER RUBBER [H]

L-SO Tubing Head	Part Number	QTY
4 1/2" 8 RD		
1 1/2"	3011018	1
2 1/4"	3011018	1
2 3/4"	3011019	1
2 7/8"	3011020	1
3 1/2"	3011021	1
5 1/2" 8 RD		
1 1/2"	3011018	1
2 1/4"	3011018	1
2 3/4"	3011019	1
2 7/8"	3011020	1
3 1/2"	3011021	1
7" 8RD		
1 1/2"	3011018	1
2 1/4"	3011018	1
2 3/4"	3011019	1
2 7/8"	3011020	1
3 1/2"	3011021	1



BODY [I]

L-SO Tubing Head	Part Number	QTY
4 1/2" 8 RD Male	30150045	1
4 1/2" 8 RD Female	30150284	1
5 1/2" 8 RD Male	30150046	1
5 1/2" 8 RD Female	30150285	1
7" 8RD Male	30150047	1
7" 8RD Female	30150286	1

TYPE L-HHS TUBING HEAD

1,500 PSI Working Pressure

FEATURES:

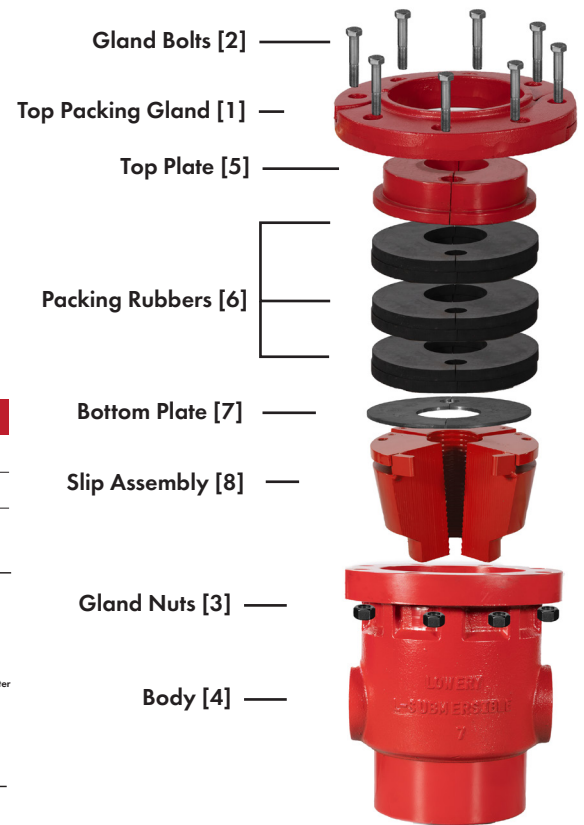
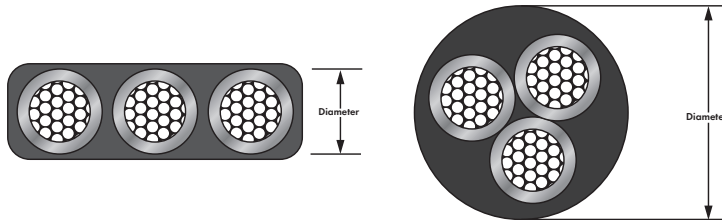
- Full opening bore
- Hinged Slips
- Split Packing Gland
- 2" LP Side Outlets

Flat Cable Style (Shown Below)

#6	0.500 Inch
#4	0.562 Inch
#2	0.655 Inch

Round Cable Style (Shown Below)

#6	0.862 Inch
#4	1.01 Inch
#2	1.21 Inch



HEAD COMPLETE

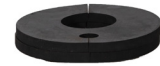
	4 ½ 8RF	5 ½ 8RF	7 8RF
Bottom Connection (Inches)	4 ½ 8RF	5 ½ 8RF	7 8RF
Suspended String (Inches)	2 ½ & 2 ¾	2 ½ & 2 ¾	2 ½ & 2 ¾
Max Slip Load Rating (lbs)	80,000	80,000	80,000
Packing Gland	8 Nuts & Bolts	8 Nuts & Bolts	8 Nuts & Bolts
Cap Material	Ductile Iron	Ductile Iron	Ductile Iron
Body Material	Ductile Iron	Ductile Iron	Ductile Iron
Height (Inches)	14	14	14
Weight (lbs)	175	170	165
Packing Rubber OD	7 ½	7 ½	7 ½



TOP PACKING GLAND [1]	Part Number	QTY
L-HHS 1500 PSI		
Top Packing Gland with Screws & Nuts		
Top Packing Gland	301976	1

GLAND BOLTS [2]	Part Number	QTY
L-HHS 1500 PSI		
¾" x 4 ¼" Grade 8 Hex Cap Screw	302107	8

GLAND NUTS [3]	Part Number	QTY
L-HHS 1500 PSI		
¾" Grade 8 Nut	302108	8



BODY [4]

L-HHS 1500 PSI	Part Number	QTY
4 1/2" 8RD Female	301977	1
5 1/2" 8RD Female	301978	1
7" 8RD Female	301979	1

TOP PLATE [5]

L-HHS 1500 PSI	Part Number	QTY
Flat Cable Style		
#6 2 3/8" w3 (.500) Holes	302104	1
a #6 2 3/8" W/3 (.500) Holes	302239	1
b #4 2 3/8" W/3 (.562) Holes	302242	1
c #4 2 3/8" W/3 (.562) Holes	302245	1
d #2 2 3/8" W/3 (.655) Holes	302248	1
Round Cable Style		
e #6 2 3/8" W/1 (.862) Hole	302251	1
f #6 2 3/8" W/1 (.862) Hole	302254	1
g #4 2 3/8" W/1 (1.01) Hole	302154	1
h #4 2 3/8" W/1 (1.01) Hole	302156	1
i #2 2 3/8" W/1 (1.21) Hole	302257	1
j #2 2 3/8" W/1 (1.21) Hole	302260	1
k 2 3/8" With no Hole	302169	1
l 2 3/8" with no Hole	302263	1

PACKING RUBBERS [6]

L-HHS 1500 PSI	Part Number	QTY
Flat Cable Style		
#6 2 3/8" w3 (.500) Holes	302105	3
a #6 2 3/8" W/3 (.500) Holes	302240	3
b #4 2 3/8" W/3 (.562) Holes	302243	3
c #4 2 3/8" W/3 (.562) Holes	302246	3
d #2 2 3/8" W/3 (.655) Holes	302249	3
Round Cable Style		
e #4 2 3/8" W/1 (1.01) hole	302166	3
f #4 2 3/8" W/1 (1.01) hole	302163	3
g #6 2 3/8" W/1 (.862) hole	302252	3
h #6 2 3/8" W/1 (.862) hole	302255	3
i #2 2 3/8" W/1 (1.21) hole	302258	3
j #2 2 3/8" W/1 (1.21) hole	302261	3
k 2 3/8" with no hole	302170	3
l 2 3/8" with no hole	302264	3



BOTTOM PLATE [7]

L-HHS 1500 PSI	Part Number	QTY
Flat Cable Style		
#6 2 3/8" w3 (.500) Holes	302106	1
a #6 2 3/8" W/3 (.500) Holes	302241	1
b #4 2 3/8" W/3 (.562) Holes	302244	1
c #4 2 3/8" W/3 (.562) Holes	302247	1
d #2 2 3/8" W/3 (.655) Holes	302250	1
Round Cable Style		
e #6 2 3/8" W/1 (.862) Hole	302253	1
f #6 2 3/8" W/1 (.862) Hole	302256	1
g #4 2 3/8" W/1 (1.01) Hole	302155	1
h #4 2 3/8" W/1 (1.01) Hole	302157	1
i #2 2 3/8" W/1 (1.21) Hole	302259	1
j #2 2 3/8" W/1 (1.21) Hole	302262	1
k 2 3/8" With no Hole	302171	1
l 2 3/8" with no Hole	302265	1

SLIP ASSEMBLY [8]

L-HHS 1500 PSI	Part Number	QTY
Flat Cable Style		
#6 2 3/8" w3 (.500) Holes	302035	1
a #6 2 3/8" W/3 (.500) Holes	302036	1
b #4 2 3/8" W/3 (.562) Holes	302035	1
c #4 2 3/8" W/3 (.562) Holes	302036	1
d #2 2 3/8" W/3 (.655) Holes	302035	1
Round Cable Style		
e #6 2 3/8" W/1 (.862) Hole	302035	1
f #6 2 3/8" W/1 (.862) Hole	302036	1
g #4 2 3/8" W/1 (1.01) Hole	302035	1
h #4 2 3/8" W/1 (1.01) Hole	302036	1
i #2 2 3/8" W/1 (1.21) Hole	302035	1
j #2 2 3/8" W/1 (1.21) Hole	302036	1
k 2 3/8" With no Hole	302035	1
l 2 3/8" with no Hole	302036	1

TYPE L-CE CASING HEAD

1,500 PSI Working Pressure

L-CE-B

Suspended String size for 8 3/8" body is 2 3/8", 2 7/8", 3 1/2"

FEATURES:

- Full opening bore
- 8RD API top thread body
- Hinged Slips with Snap Ring
- Large diameter Top Cap with hammer lugs
- Male or Female bottom connection available



HEAD COMPLETE		
Bottom Connection (Inches)	7	8 3/8"
Bore (Inches)	Full	Full
Suspended String (Inches)	4 1/2, 5 1/2	4 1/2, 5 1/2, 7
Max Slip Load Rating (lbs)	85,000	100,000
Cap Thread (Inches)	8 3/8" 8RD	9 3/8" 8RD
Cap Material	Ductile Iron	Ductile Iron
Body Material	Carbon Steel	Carbon Steel
Height (Inches)	11 1/2	12
Weight (lbs)	101	130
Packing Rubber OD	7 1/2	8 3/8"



TOP CAP [A]

L-CE-B Casing Head 8 3/4"	Part Number	QTY
L-CE-B Casing Head 8 3/4"	30107	1
L-CE Casing Head 7"	301062	1
L-CE Casing Head 8 3/4"	30107	1

TOP PLATE [B]

L-CE-B Casing Head 8 3/4"	Part Number	QTY
2 1/2"	30196	1
2 3/4"	30197	1
3 1/2"	30198	1
L-CE Casing Head 7"	Part Number	QTY
4 1/2"	30401	1
5 1/2"	30402	1
L-CE Casing Head 8 3/4"	Part Number	QTY
4 1/2"	30200	1
5 1/2"	30201	1
7"	30203	1

PACKING RUBBER [C]

L-CE-B Casing Head 8 3/4"	Part Number	QTY
2 1/2"	30152776	2
2 3/4"	30152777	2
3 1/2"	30152778	2
L-CE Casing Head 7"	Part Number	QTY
4 1/2"	30152774	2
5 1/2"	30152775	2
L-CE Casing Head 8 3/4"	Part Number	QTY
4 1/2"	30152779	2
5 1/2"	30152780	2
7"	30152781	2

SLIP BOWL

L-CE-B Casing Head 8 3/4"	Part Number	QTY
L-CE-B Casing Head 8 3/4"	30470	1



BOTTOM PLATE [D]

L-CE-B Casing Head 8 3/4"	Part Number	QTY
2 1/2"	30212	1
2 3/4"	30213	1
3 1/2"	30214	1
L-CE Casing Head 7"	Part Number	QTY
4 1/2"	30369	1
5 1/2"	30370	1
L-CE Casing Head 8 3/4"	Part Number	QTY
4 1/2"	30216	1
5 1/2"	30217	1
7"	30219	1

SLIP ASSEMBLY AND SNAP RING [E]

L-CE-B Casing Head 8 3/4"	Part Number	QTY
8 3/8" 8RD		
2 1/2"	30153451	1
2 3/4"	30153452	1
3 1/2"	30153453	1
L-CE Casing Head 7"	Part Number	QTY
4 1/2"	30153448	1
5 1/2"	30153449	1
L-CE Casing Head 8 3/4"	Part Number	QTY
8 3/8" 8RD		
4 1/2"	30153454	1
5 1/2"	30153455	1
7"	30153456	1

BODY [F]

L-CE-B Casing Head 8 3/4"	Part Number	QTY
8 3/8" 8RD Male	30150753	1
8 3/8" 8RD Female	30151002	1
8 3/8" Slip Joint	30151251	1
L-CE Casing Head 7"	Part Number	QTY
7" 8RD Male	30150751	1
7" 8RD Female	30151000	1
L-CE Casing Head 8 3/4"	Part Number	QTY
8 3/8" 8RD Male	30150753	1
8 3/8" 8RD Female	30151002	1
8 3/8" Slip Joint	30151251	1

TYPE L-ECA CASING HEAD

1,500 PSI Working Pressure

L-ECA-B

Suspended String size for 8 3/8" body is 2 1/2", 2 7/8", 3 1/2"

FEATURES:

- Full opening bore on 7 & 8 3/8" bodies
- 8RD API top thread body
- Hinged Slips with Snap Ring
- Large diameter Top Cap with hammer lugs
- Male, Female, or Slip Joint bottom connection available



HEAD COMPLETE

Bottom Connection (Inches)	7	8 3/8"	9 5/8"	10 3/4"
Bore (Inches)	Full	Full	8 3/8"	8 3/8"
Suspended String (Inches)	4 1/2", 5 1/2"	4 1/2", 5 1/2", 7"	4 1/2", 5 1/2", 7"	4 1/2", 5 1/2", 7"
Max Slip Load Rating (lbs)	85,000	100,000	100,000	100,000
Cap Thread (Inches)	8 3/8" 8RD	10 3/8" 8RD	10 3/8" 8RD	10 3/8" 8RD
Cap Material	Ductile Iron	Ductile Iron	Ductile Iron	Ductile Iron
Body Material	Carbon Steel	Carbon Steel	Carbon Steel	Carbon Steel
Height (Inches)	11 1/2"	13"	13"	13"
Weight (lbs)	101	182	185	173
Packing Rubber OD	7 1/2"	9 1/8"	9 1/8"	9 1/8"



TOP CAP [A]	PART NUMBER	QTY
L-ECA-B Casing Head 8 3/8"	30312	1
L-ECA Casing Head 9 5/8" & 10 3/4"	30312	1
L-ECA Casing Head 7"	301062	1
L-ECA Casing Head 8 3/8"	30312	1

TOP PLATE [B]	Part Number	QTY
L-ECA-B Casing Head 8 3/8"	Part Number	QTY
2 1/2"	30467	1
2 7/8"	30471	1
3 1/2"	30474	1
L-ECA Casing Head 9 5/8" & 10 3/4"	Part Number	QTY
4 1/2"	30589	1
5 1/2"	30593	1
7"	30597	1
L-ECA Casing Head 7"	Part Number	QTY
4 1/2"	30401	1
5 1/2"	30402	1
L-ECA Casing Head 8 3/8"	Part Number	QTY
4 1/2"	30383	1
5 1/2"	30384	1
7"	30385	1

PACKING RUBBER [C]	Part Number	QTY
L-ECA-B Casing Head 8 3/8"	Part Number	QTY
2 1/2"	30152787	2
2 7/8"	30152788	2
3 1/2"	30152789	2
L-ECA Casing Head 9 5/8" & 10 3/4"	Part Number	QTY
4 1/2"	30152793	2
5 1/2"	30152794	2
7"	30152795	2
L-ECA Casing Head 7"	Part Number	QTY
4 1/2"	30152774	1
5 1/2"	30152775	1
L-ECA Casing Head 8 3/8"	Part Number	QTY
4 1/2"	30152790	2
5 1/2"	30152791	2
7"	30152803	2





BOTTOM PLATE [D]

L-ECA-B Casing Head 8 3/4"	Part Number	QTY
2 3/4"	30469	1
2 1/2"	30473	1
3 1/2"	30476	1
L-ECA Casing Head 9 3/4" & 10 3/4"	Part Number	QTY
4 1/2"	30591	1
5 1/2"	30595	1
7"	30599	1
L-ECA Casing Head 7"	Part Number	QTY
4 1/2"	30369	1
5 1/2"	30370	1
L-ECA Casing Head 8 3/4"	Part Number	QTY
4 1/2"	30389	1
5 1/2"	30390	1
7"	30391	1

SLIP ASSEMBLY AND SNAP RING [E]

L-ECA-B Casing Head 8 3/4"	Part Number	QTY
8 3/4" 8RD		
2 3/4"	30153451	1
2 1/2"	30153452	1
3 1/2"	30153453	1
L-ECA Casing Head 9 3/4" & 10 3/4"	Part Number	QTY
9 3/4" 8RD		
4 1/2"	30153448	1
5 1/2"	30153449	1
7"	30153466	1
10 3/4" 8RD		
4 1/2"	30153448	1
5 1/2"	30153449	1
7"	30153466	1
L-ECA Casing Head 7"	Part Number	QTY
7" 8RD		
4 1/2"	30153448	1
5 1/2"	30153449	
L-ECA Casing Head 8 3/4"	Part Number	QTY
8 3/4" 8RD		
4 1/2"	30153454	1
5 1/2"	30153455	1
7"	30153456	1

BODY [F]

L-ECA Casing Head 7"	Part Number	QTY
7" 8RD Male	30150760	1
7" 8RD Female	30151007	1
7" Slip Joint	30151256	1
L-ECA Casing Head 8 3/4"	Part Number	QTY
8 3/4" 8RD Male	30150761	1
8 3/4" 8RD Female	30151009	1
8 3/4" Slip Joint	30151257	1
9 3/4" 8RD Male	30150762	1
9 3/4" 8RD Female	30151010	1
10 3/4" 8RD Male	30150783	1

SLIP BOWL [G]

L-CE-B Casing Head 8 3/4"	30470	1
L-ECA Casing Head 9 3/4" & 10 3/4"	30619	1

TYPE L-MC CASING HEAD

1,500 & 2,000 PSI Working Pressure

FEATURES:

- Full opening bore on 7" body
- 8 7/8" 8RD API MOD top thread body
- Hinged Slips with Snap Ring
- Large diameter Top Cap with hammer lugs
- Male and Female connection available on 7"
- Male available on 8 7/8" only



HEAD COMPLETE 1,500 PSI

Bottom Connection (Inches)	7	8 7/8" Male Only
Bore (Inches)	Full	6.4
Suspended String (Inches)	4 1/2	4 1/2
Max Slip Load Rating (lbs)	90,000	90,000
Cap Thread (Inches)	8 7/8" 8RD API MOD	8 7/8" 8RD API MOD
Cap Material	Ductile Iron	Ductile Iron
Body Material	Carbon Steel	Carbon Steel
Height (Inches)	11"	11"
Weight (lbs)	83	101

HEAD COMPLETE 2,000 PSI

Bottom Connection (Inches)	7	8 7/8"
Bore (Inches)	Full	6.4
Suspended String (Inches)	4 1/2	4 1/2
Max Slip Load Rating (lbs)	90,000 lbs.	90,000 lbs.
Cap Thread (Inches)	8 7/8" 8RD API MOD	8 7/8" 8RD API MOD



TOP CAP [A]		
L-MC 1500 & 2000 Casing Head	Part Number	QTY
Top Cap, 1500 PSI	301443	1
Top Cap, 2000 PSI	301755	1



TOP PLATE [B]		
L-MC 1500 & 2000 Casing Head	Part Number	QTY
4 1/2"	301436	1



PACKING RUBBER [C]		
L-MC 1500 & 2000 Casing Head 7 1/2" OD	Part Number	QTY
4 1/2"	301445	1



SLIP ASSEMBLY AND SNAP RING [D]		
L-MC 1500 & 2000 Casing Head	Part Number	QTY
4 1/2"	30153485	1



BODY [E]		
L-MC 1500 & 2000 Casing Head	Part Number	QTY
7" 8RD Male	30150781	1
7" 8RD Female	30151031	1
8 3/4" 8RD Male	30150782	1

TYPE L-CJ CASING HEAD

2,000 PSI Working Pressure

FEATURES:

- Full opening bore
- 8RD API top thread body
- Hinged Slips with Snap Ring
- Large diameter Top Cap with hammer lugs
- Male, Female, or Slip Joint bottom connection available



HEAD COMPLETE

Bottom Connection (Inches)	7	8	9	10	11 1/4 MALE ONLY
Bore (Inches)	Full	Full	Full	Full	10"
Suspended String (Inches)	4 1/2, 5 1/2	4 1/2, 5 1/2, 7	4 1/2, 5 1/2, 7	4 1/2, 5 1/2, 7, 8 1/2	4 1/2, 5 1/2, 7, 8 1/2
Max Slip Load Rating (lbs)	85,000	120,000	120,000	120,000	120,000
Cap Thread (Inches)	8 3/8 RD	10 3/8 RD	11 3/8 RD	11 3/8 RD	11 3/8 RD
Cap Material	Ductile Iron	Ductile Iron	Ductile Iron	Ductile Iron	Ductile Iron
Body Material	Carbon Steel	Carbon Steel	Carbon Steel	Carbon Steel	Carbon Steel
Height (Inches)	13	13 1/2	14 1/2	13	12 1/2
Weight (lbs)	126	189	242	211	234



TOP CAP [A]

L-CJ Casing Head	Part Number	QTY
9 3/8" 8RD	30313	1
10 3/8" 8RD	30313	1
11 3/8" 8RD	30313	1
L-CJ-B Casing Head	Part Number	QTY
9 3/8" 8RD	30313	1
10 3/8" 8RD	30313	1
11 3/8" 8RD	30313	1
L-CJ-B Casing Head 8 3/8"	Part Number	QTY
8 3/8" 8 RD	30312	1
L-CJ 7: Casing Head	Part Number	QTY
Top Cap for 4 1/2" Parts	30311	1
Top Cap for 5 1/2" Parts	30576	1

TOP PLATE [B]

L-CJ Casing Head	Part Number	QTY
L-CJ 7"		
4 1/2"	30403	
5 1/2"	30404	
L-CJ 8 3/8"	Part Number	QTY
4 1/2"	30383	1
5 1/2"	30384	1
7"	30385	1
L-CJ 9 3/8"-11 3/8"	Part Number	QTY
4 1/2"	30371	1
5 1/2"	30372	1
7"	30373	1
8 3/8"	30374	1
L-CJ-B 9 3/8"-11 3/8"	Part Number	QTY
2 3/8"	30490	1
2 3/8"	30494	1
3 1/2"	30497	1
L-CJ-B 8 3/8"	Part Number	QTY
2 3/8"	30467	1
2 3/8"	30471	1
3 1/2"	30474	1

PACKING RUBBER [C]

L-CJ Casing Head 10 3/8" OD	Part Number	QTY
4 1/2"	30152807	3
5 1/2"	30152808	3
7"	30152809	3
8 3/8"	30152811	3
L-CJ-B Casing Head 10 3/8" OD	Part Number	QTY
2 3/8"	30152804	3
2 3/8"	30152805	3
3 1/2"	30152806	3
L-CJ-B Casing Head 8 3/8" 9 3/8" OD	Part Number	QTY
2 3/8"	30152798	3
2 3/8"	30152799	3
3 1/2"	30152800	3
L-CJ 7: Casing Head 7 1/2" OD	Part Number	QTY
4 1/2"	30152796	3
5 1/2"	30152797	3
L-CJ Casing Head 8 3/8" 9 3/8" OD	Part Number	QTY
4 1/2"	30152801	3
5 1/2"	30152802	3
7"	30152803	3



BOTTOM PLATE [D]

L-CJ Casing Head 9 ½ & 10 ½	Part Number	QTY
4 ½"	30379	1
5 ½"	30380	1
7"	30381	1
8 ½"	30382	1
L-CJ-B Casing Head 9 ½ & 10 ½	Part Number	QTY
2 ½"	30492	1
2 ¾"	30496	1
3 ½"	30499	1
L-CJ-B Casing Head 8 ¾"	Part Number	QTY
2 ¾"	30469	1
2 ¾"	30473	1
3 ½"	30476	1
L-CJ 7: Casing Head	Part Number	QTY
4 ½"	30369	1
5 ½"	30370	1
L-CJ Casing Head 8 ¾"	Part Number	QTY
4 ½"	30389	1
5 ½"	30390	1
7"	30391	1

SLIP ASSEMBLY AND SNAP RING [E]

L-CJ Casing Head	Part Number	QTY
9 ½" 8RD Body		
4 ½"	30153454	1
5 ½"	30153455	1
7"	30153486	1
10 ¾" 8RD Body	Part Number	QTY
4 ½"	30153454	1
5 ½"	30153455	1
7"	30153486	1
8 ½"	30153469	1
11 ¾" 8RD Body	Part Number	QTY
4 ½"	30153454	1
5 ½"	30153455	1
7"	30153486	1
8 ½"	30153469	1
L-CJ-B Casing Head	Part Number	QTY
2 ¾"	30153451	1
2 ¾"	30153452	1
3 ½"	30153453	1
L-CJ-B Casing Head 8 ¾"	Part Number	QTY
2 ¾"	30153451	1
2 ¾"	30153452	1
3 ½"	30153453	1
L-CJ 7: Casing Head	Part Number	QTY
4 ½"	30153448	1
5 ½"	30153449	1
L-CJ Casing Head 8 ¾"	Part Number	QTY
4 ½"	30153454	1
5 ½"	30153455	1
7"	30153456	1

BODY [G]

L-CJ Casing Head	Part Number	QTY
9 ½" 8RD Male	30150769	1
9 ½" 8RD Female	30151018	1
9 ½" Slip Joint	30151265	1
10 ¾" 8RD Male	30150770	1
10 ¾" 8RD Male	30151019	1
10 ¾" Slip Joint	30151266	1
11 ¾" 8RD Male	30150771	1
L-CJ-B Casing Head	Part Number	QTY
9 ½" 8RD Male	30150769	1
9 ½" 8RD Female	30151018	1
9 ½" Slip Joint	30151265	1
10 ¾" 8RD Male	30150770	1
10 ¾" 8RD Male	30151019	1
10 ¾" Slip Joint	30151266	1
11 ¾" 8RD Male	30150771	1
L-CJ-B Casing Head 8 ¾"	Part Number	QTY
8 ¾" 8 RD Male	30150768	1
8 ¾" 8 RD Female	30151017	1
8 ¾" Slip Joint	30151264	1
L-CJ 7: Casing Head	Part Number	QTY
7" 8RD Male	30150767	1
7" 8RD Female	30151016	1
7" Slip Joint	30151263	1
L-CJ Casing Head 8 ¾"	Part Number	QTY
8 ¾" 8 RD Male	30150768	1
8 ¾" 8 RD Female	30151017	1
8 ¾" Slip Joint	30151264	1

SLIP BOWL [F]

L-CJ-B Casing Head 9 ½ & 10 ½	Part Number	QTY	
4 ½"	30470	30573	1
2 ¾"	30470	30573	1
3 ½"	30470	30573	1
L-CJ-B Casing Head 8 ¾"	Part Number	QTY	
30470		1	

TYPE L-MS TUBING HEAD

1,500 PSI Working Pressure

L-MS TUBING HEAD WITH STRIPPER RUBBER

- 1,500 PSI working pressure
- Adapter with O-Ring: 9.70 Lbs
- Stripper Rubber available for all sizes
- Stripper Rubbers are not designed to withstand full pressure rating.

FEATURES:

- Seamless steel Body
- Full bore on 4 ½ Body
- 1 ¾ compact Slip length
- Full flow through outlet; no restrictions
- Hinged Slip segments with Snap Ring
- Male or Female bottom connection available



HEAD COMPLETE			
Bottom Connection (Inches)	4 ½ 8RD	5 ½ 8RD	7 8RD
Bore (Inches)	Full	4	4
Suspended String (Inches)	1 ½, 2 ¾	1 ½, 2 ¾	1 ½, 2 ¾
Max Slip Load Rating (lbs)	45,000	45,000	45,000
Cap Thread (Inches)	5 ½ 8RD	5 ½ 8RD	5 ½ 8RD
Cap Material	Ductile Iron	Ductile Iron	Ductile Iron
Body Material	Carbon Steel	Carbon Steel	Carbon Steel
Height (Inches)	9	10	11
Weight (lbs)	44	46	55
Packing Rubber OD	4 ¾	4 ¾	4 ¾



TOP CAP [A]

L-MS Tubing Head	Part Number	QTY
	30944	1



TOP PLATE [B]

L-MS Tubing Head	Part Number	QTY
1 1/2"	30945	1
2 3/4"	30948	1



PACKING RUBBER [C]

L-MS Tubing Head	Part Number	QTY
Packing Rubber 1 1/2" (4 3/4" OD)	30152761	2
Packing Rubber 2 3/4" (4 3/4" OD)	30152762	2



SLIP ASSEMBLY AND SNAP RING [D]

L-MS Tubing Head	Part Number	QTY
Slip for 4 1/2", 5 1/2", 7"		
1 1/2"	30153423	1
2 3/4"	30153425	1



ADAPTER [E]

L-MS Tubing Head	Part Number	QTY
Stripper Rubber adapter with O-Ring	30154505	1
O-Ring	30957	1



STRIPPER RUBBER [F]

L-MS Tubing Head	Part Number	QTY
Stripper Rubber for 4 1/2", 5 1/2", 7"		
1 1/2"	30961	1
2 3/4"	30962	1



BODY [G]

L-MS Tubing Head	Part Number	QTY
4 1/2" 8RD Male	30150019	1
4 1/2" 8RD Female	30150250	1
5 1/2" 8RD Male	30150020	1
5 1/2" 8RD Female	30150251	1
7" 8RD Male	30150021	1
7" 8RD Female	30150252	1

TYPE L-SW TUBING HEAD

1,500 PSI Working Pressure

L-SWS TUBING HEAD WITH STRIPPER RUBBER

- 1,500 PSI working pressure
- Adapter with O-Ring: 26.1 lbs
- Stripper Rubbers are not designed to withstand full pressure rating

FEATURES:

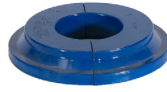
- Seamless steel Body
- Full opening bore on all sizes
- Hinged Slips segments with Snap Ring
- Stripper Rubber available
- Male or Female bottom connection available



HEAD COMPLETE		
Bottom Connection (Inches)	4 ½ 8RD	5 ½ 8RD
Bore (Inches)	Full	Full
Suspended String (Inches)	2 ¼, 2 ½	2 ¼, 2 ½, 3 ½
Max Slip Load Rating (lbs)	65,000	65,000
Cap Thread (Inches)	6 ¾ 6V	6 ¾ 6V
Cap Material	Ductile Iron	Ductile Iron
Body Material	Carbon Steel	Carbon Steel
Height (Inches)	10	10
Weight (lbs)	78	74
Packing Rubber OD	5 ¼	5 ¼



TOP CAP [A]		
L-SW Tubing Head 4 1/2" & 5 1/2"	Part Number	QTY
	301080	1



TOP PLATE [B]		
L-SW Tubing Head 4 1/2" & 5 1/2"	Part Number	QTY
1 1/2"	301092	1
2 3/4"	301093	1
2 7/8"	301094	1
3 1/2"	301086	1



PACKING RUBBER [C] 5 3/4" OD		
L-SW Tubing Head	Part Number	QTY
1 1/2"	301095	1
2 3/4"	301096	1
2 7/8"	301097	1
3 1/2"	30152831	2



BOTTOM PLATE [D]		
L-SW Tubing Head	Part Number	QTY
1 1/2"	301098	1
2 3/4"	301099	1
2 7/8"	301100	1
3 1/2"	301088	1



SLIP ASSEMBLY AND SNAP RING [E]		
L-SW Tubing Head	Part Number	QTY
4 1/2" 8R		
1 1/2"	30153406	1
2 3/4"	30153407	1
2 7/8"	30153408	1
5 1/2" 8R		
1 1/2"	30153406	1
2 3/4"	30153407	1
2 7/8"	30153408	1
3 1/2" (Only 5 1/2" Body)	30153418	1



STRIPPER RUBBER [F]		
L-SW Tubing Head	Part Number	QTY
4 1/2" 8RD & 5 1/2" 8 RD		
1 1/2"	301108	1
2 3/4"	301109	1
2 7/8"	301110	1



ADAPTER [G]		
L-SW Tubing Head	Part Number	QTY
O-Ring	301107	1
Stripper Rubber Adapter With O-Ring	30154501	1



BODY [H]		
L-SW Tubing Head	Part Number	QTY
4 1/2" 8 RD Male	30150005	1
4 1/2" 8 RD Female	30150260	1
5 1/2" 8 RD Male	30150006	1
5 1/2" 8 RD Female	30150261	1

405-677-7222
 sales@wnsoilfield.com
 www.wnsoilfield.com

TYPE L-S TUBING HEAD

1,500 PSI Working Pressure

L-SS TUBING HEAD WITH STRIPPER RUBBER

- 1,500 PSI working pressure
- Adapter with O-Ring: 17 lbs
- Stripper Rubber for sizes available: 1, 1 1/2, 2 1/8, 2 3/8
- Stripper Rubbers are not designed to withstand full pressure rating.

FEATURES:

- Seamless steel Body
- Full bore 2 3/8 through 4 1/2 bodies
- Full 2 3/4 Slip length
- Hinged Slip segments with Snap Ring
- Stripper Rubber available in all sizes except 2 3/8
- Male or Female bottom connection available



HEAD COMPLETE

Bottom Connection (Inches)	2 3/8 8RD	2 3/8 8RD	3 1/2 8RD	3 1/2 10RD MALE ONLY	4 1/2 8RD	5 1/2 8RD	7 8RD
Bore (Inches)	Full	Full	Full	Full	Full	4	4
Suspended String (Inches)	1, 1 1/4	1, 1 1/4, 1 1/2, 2 1/8	1, 1 1/4, 1 1/2, 2 1/8	1, 1 1/4, 1 1/2, 2 1/8	1, 1 1/4, 1 1/2, 2 1/8, 2 3/8, 2 3/4	1, 1 1/4, 1 1/2, 2 1/8, 2 3/8, 2 3/4	1, 1 1/4, 1 1/2, 2 1/8, 2 3/8, 2 3/4
Max slip load rating (lbs)	45,000	45,000	45,000	45,000	45,000	45,000	45,000
Cap thread (Inches)	5 1/2 8RD	5 1/2 8RD	5 1/2 8RD	5 1/2 8RD	5 1/2 8RD	5 1/2 8RD	5 1/2 8RD
Cap material	Ductile Iron	Ductile Iron	Ductile Iron	Ductile Iron	Ductile Iron	Ductile Iron	Ductile Iron
Body material	Carbon Steel	Carbon Steel	Carbon Steel	Carbon Steel	Carbon Steel	Carbon Steel	Carbon Steel
Height (Inches)	10	10	10	10	9	10	11
Weight (lbs)	51	48	46	46	46	47	57
Packing Rubber OD	4 3/4	4 3/4	4 3/4	4 3/4	4 3/4	4 3/4	4 3/4



TOP CAP [A]		
L-S Tubing Head	Part Number	QTY
	30944	1

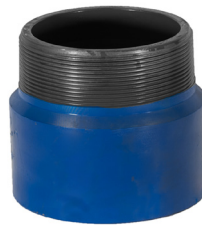
TOP PLATE [B]		
L-S Tubing Head	Part Number	QTY
1"	301010	1
1 1/4"	301013	1
1 1/2"	30945	1
2 1/8"	301016	1
2 3/8"	30948	1
2 3/4"	30951	1

PACKING RUBBER [C] 4 3/4" OD		
L-S Tubing Head	Part Number	QTY
1"	301011	1
1 1/4"	30152759	2
1 1/2"	30152761	2
2 1/8"	301017	1
2 3/8"	30152762	2
2 3/4"	30952	1



SLIP ASSEMBLY AND SNAP RING [D]

L-S Tubing Head	Part Number	QTY
Slip		
2 7/8" 8RD Body		
1"	30153428	1
1 1/4"	30153430	1
2 7/8" 8RD Body		
1"	30153428	1
1 1/4"	30153430	1
1 1/2"	30153432	1
2 7/8"	30153434	1
3 1/2" 8RD Body		
1"	30153428	1
1 1/4"	30153430	1
1 1/2"	30153432	1
2 7/8"	30153434	1
2 3/4"	30153435	1
3 3/4" 10RD Body		
1"	30153428	1
1 1/4"	30153430	1
1 1/2"	30153432	1
2 7/8"	30153434	1
2 3/4"	30153435	1
2 7/8"	30153436	1
5 1/2" 8RD Body		
1"	30153428	1
1 1/4"	30153430	1
1 1/2"	30153432	1
2 7/8"	30153434	1
2 3/4"	30153435	1
2 7/8"	30153436	1
7 1/2" 8RD Body		
1"	30153428	1
1 1/4"	30153430	1
1 1/2"	30153432	1
2 7/8"	30153434	1
2 3/4"	30153435	1
2 7/8"	30153436	1



ADAPTER [E]

L-S Tubing Head	Part Number	QTY
Stripper Rubber Adapter with O-Ring	30154506	1
O-Ring	30957	1



BODY [G]

L-S Tubing Head	Part Number	QTY
2 7/8" 8RD Male	30150022	1
2 7/8" 8RD Female	30150253	1
2 7/8" 8RD Male	30150023	1
2 7/8" 8RD Female	30150254	1
3 1/2" 8RD Male	30150024	1
3 1/2" 8RD Female	30150255	1
3 3/4" 10RD Male	30150025	1
7" 8RD Male	30150 028	1
7" 8RD Female	30150259	1
4 1/2" 8RD Male	30150026	1
4 1/2" 8RD Female	30150256	1
5 1/2" 8RD Male	30150027	1
5 1/2" 8RD Female	30150257	1



STRIPPER RUBBER [F]

L-S Tubing Head	Part Number	QTY
Stripper Rubber		
4 1/2" 8RD		
1"	301019	1
1 1/2"	30961	1
2 7/8"	30961	1
2 3/4"	30962	1
5 1/2" 8RD		
1"	301019	1
1 1/2"	30961	1
2 7/8"	30961	1
2 3/4"	30962	1
7" 8RD		
1"	301019	1
1 1/2"	30961	1
2 7/8"	30961	1
2 3/4"	30962	1

TYPE L-HW TUBING HEAD

2,000 PSI Working Pressure

L-HWS TUBING HEAD WITH STRIPPER RUBBER

- 2,000 PSI working pressure
- Adapter with O-Ring: 52.6 lbs
- Stripper Rubbers available in 2 3/4", 2 1/2"
- Stripper Rubbers are not designed to withstand full pressure rating.

FEATURES:

- Seamless steel Body
- Full opening bore on all sizes
- Hinged Slips with Snap Ring
- Stripper Rubber available
- Male or Female bottom connection available

- Top Cap [A] —
- Top Plate [B] —
- Packing Rubber [C] —
- Bottom Plate [D] —
- Slip Assembly and Snap Ring [E] —
- Slip Bowl [F] —
- Adapter [G] —
- Stripper Rubber [H] —
- Body [I] —

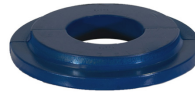


HEAD COMPLETE			
Bottom Connection (Inches)	4 1/2 8RD	5 1/2 8RD	7 8RD FEMALE ONLY
Bore (Inches)	Full	Full	Full
Suspended String (Inches)	2 3/4, 2 1/2	2 3/4, 2 1/2	2 3/4, 2 1/2
Max Slip Load Rating (lbs)	80,000	80,000	80,000
Cap Thread (Inches)	8 1/4 6V	8 1/4 6V	8 1/4 6V
Cap Material	Ductile Iron	Ductile Iron	Ductile Iron
Body Material	Carbon Steel	Carbon Steel	Carbon Steel
Height (Inches)	12	12	12
Weight (lbs)	117	112	120
Packing Rubber OD	7 1/4	7 1/4	7 1/4



TOP CAP [A]

L-HW Tubing Head	Part Number	QTY
	301126	1



TOP PLATE [B]

L-HW Tubing Head	Part Number	QTY
2 3/8"	301127	1
2 7/8"	301130	1



PACKING RUBBER [C] 7 1/4" OD

L-HW Tubing Head	Part Number	QTY
2 3/8"	30773	1
2 7/8"	30774	1



BOTTOM PLATE [D]

L-HW Tubing Head	Part Number	QTY
2 3/8"	30781	1
2 7/8"	30782	1



SLIP ASSEMBLY AND SNAP RING [E]

L-HW Tubing Head	Part Number	QTY
4 1/2" 8RD Body		
2 3/8"	30153439	1
2 7/8"	30153440	1
5 1/2" 8RD Body		
2 3/8"	30153439	1
2 7/8"	30153440	1
7" 8 RD Body		
2 3/8"	30153439	1
2 7/8"	30153440	1



SLIP BOWL [F]

L-HW Tubing Head	Part Number	QTY
	301133	1



ADAPTER [G]

L-HW Tubing Head	Part Number	QTY
Stripper Rubber Adapter with O-Ring	30154508	1
O-Ring	3052	1



STRIPPER RUBBER [H]

L-HW Tubing Head	Part Number	QTY
4 1/2" 8RD Body		
2 3/8"	301136	1
2 7/8"	301137	1
5 1/2" 8RD Body		
2 3/8"	301136	1
2 7/8"	301137	1
7" 8 RD Body		
2 3/8"	301136	1
2 7/8"	301137	1



BODY [I]

L-HW Tubing Head	Part Number	QTY
4 1/2" 8RD Male	30150036	1
4 1/2" 8RD Female	30150273	1
5 1/2" 8RD Male	30150037	1
5 1/2" 8RD Female	30150274	1
7" 8RD Female	30150275	1

TYPE L-MSR CASING HEAD

1,500 & 2,000 PSI Working Pressure

FEATURES:

- Full opening bore on 7" body
- 8RD API top thread body
- Hinged Slips with Snap Ring
- Large diameter Top Cap with hammer lugs
- Male, Female, or Slip Joint bottom connection available



HEAD COMPLETE 1,500 PSI		
Bottom Connection (Inches)	7	8 ½
Bore (Inches)	Full	6 ¾
Suspended String (Inches)	4 ½, 5 ½	4 ½, 5 ½
Max Slip Load Rating (lbs)	90,000	90,000
Cap Thread (Inches)	8 ¾ 8RD	8 ¾ 8RD
Cap Material	Ductile Iron	Ductile Iron
Body Material	Carbon Steel	Carbon Steel
Height (Inches)	11 ½	11 ½
Weight (lbs)	97	106

HEAD COMPLETE 2,000 PSI		
Bottom Connection (Inches)	7	8 ¾
Bore (Inches)	Full	6 ¾
Suspended String (Inches)	4 ½, 5 ½	4 ½, 5 ½
Max Slip Load Rating (lbs)	90,000 lbs.	90,000 lbs.
Cap Thread (Inches)	8 ¾ 8RD	8 ¾ 8RD
Cap Material	Ductile Iron	Ductile Iron



TOP CAP [A]

Top Cap for 1500 PSI	Part Number	QTY
7" 8RD	30924	1
8 1/2" 8RD	30924	1
Top Cap for 2000 PSI	Part Number	QTY
7" 8RD	3044	1
8 1/2" 8RD	3044	1



TOP PLATE [B]

Top Plate for 1500 & 2000 PSI	Part Number	QTY
4 1/2"	30925	1
5 1/2"	30929	1



PACKING RUBBER [C] 7 3/4" OD

Packing Rubber for 1500 & 2000 PSI	Part Number	QTY
4 1/2"	30926	1
5 1/2"	30930	1



BOTTOM PLATE [D]

Bottom Plate for 1500 & 2000 PSI	Part Number	QTY
4 1/2"	30927	1
5 1/2"	90931	1



SLIP ASSEMBLY AND SNAP RING [E]

Slip Assembly & Snap Ring for 1500 & 2000 PSI	Part Number	QTY
7" 8RD Body		
4 1/2"	30153464	1
5 1/2"	30153465	1
8 1/2" 8RD Body		
4 1/2"	30153464	1
5 1/2"	30153465	1



BODY [F]

Body for 1500 & 2000 PSI	Part Number	QTY
7" 8RD Male	30150756	1
7" 8RD Female	30151004	1
7" 8RD Slip Joint	30151253	1
8 1/2" 8RD Male	30150757	1
8 1/2" 8RD Female	30151006	1
8 1/2" 8RD Slip Joint	30151255	1