

Series 20 Adjustable Choke Valve

The WNS Lowery Series Adjustable Choke Valve offers an affordable solution for low pressure liquid or gas applications.

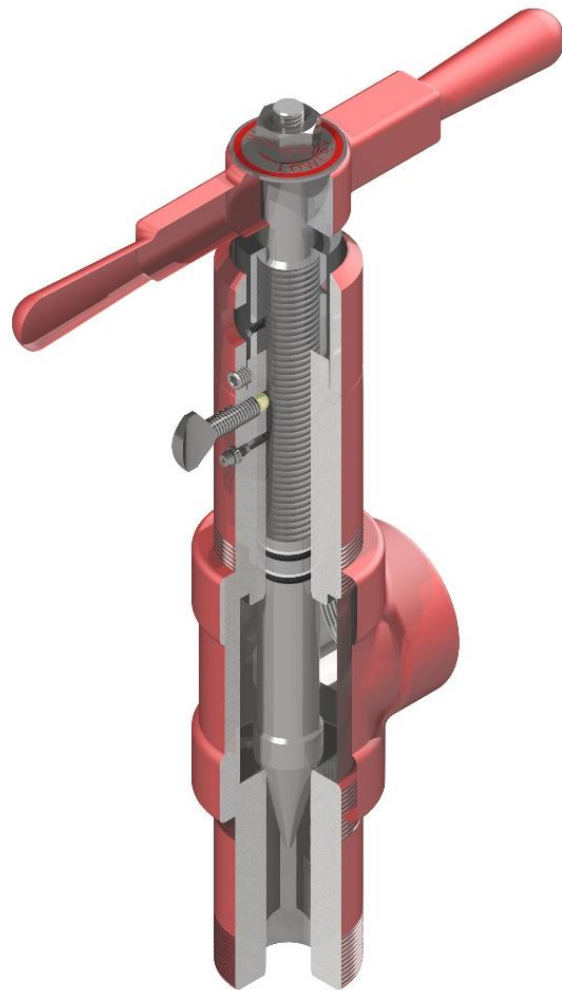
The 2" NPT Forge Tee Body is available in 2M and 3M pressure rating. The Tungsten Carbide Trim is ideal for applications with highly abrasive media.

Features:

- Low pressure
- Wide range of applications
- Economical and cost efficient
- Available with Tungsten Carbide Trim
- 3/4" & 1" trim options
- Field Adjustable

Applications:

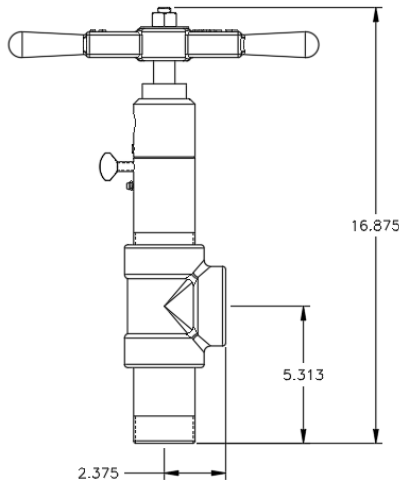
- Wellheads
- Pressure Control



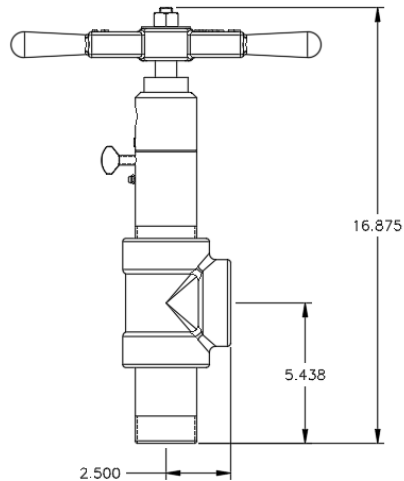
Selection Matrix

Series 20	-	X	X	X	X	X	X	
								Body/Pressure Range
		2						2" NPT 2M
		3						2" NPT 3M
								Trim Material
		A	S					Alloy Steel (Standard)
		T	C					AS/TC
								Trim Size
				3	4			3/4"
				0	1			1"
								Options
							A	Aluminum Indicator

Specifications



2" 2M Series 20



2" 3M Series 20

Materials of Construction	
Body	Forge Steel
Bonnet	Alloy Steel
Seat	Alloy Steel, Alloy Steel w/ Tungsten Carbide
Stem	Alloy Steel, Alloy Steel w/ Tungsten Carbide
Seals	Buna-N, Viton, PC Buna, EPDM, or HSN
Back-Up Ring	Teflon

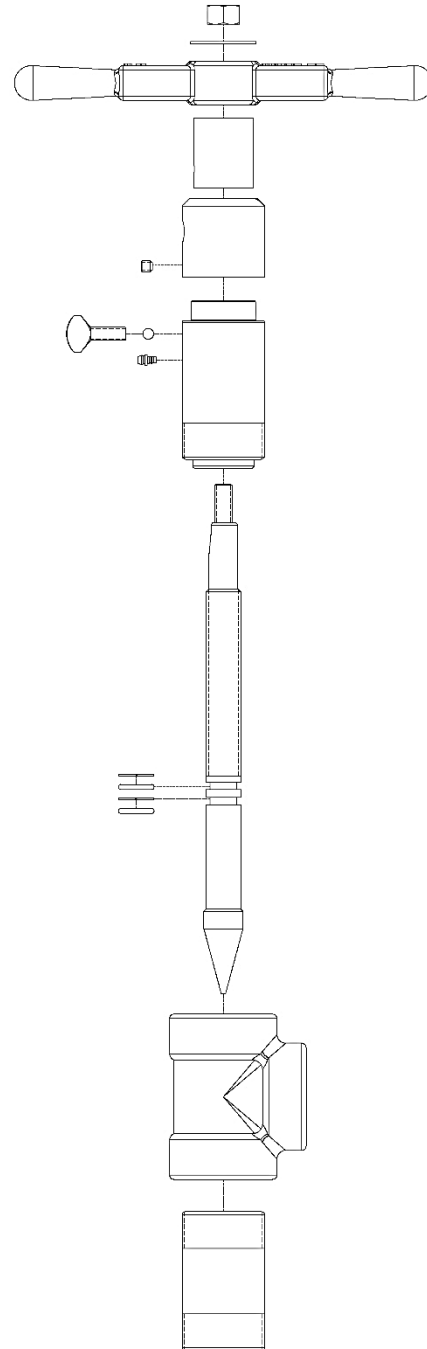
Installation and Maintenance

Installation and Start-Up:

1. Remove all shipping and protective material from the Series 20 Control Valve and inspect the unit for any damage that might have occurred during shipping and handling.
2. Install the valve based on the flow direction of the system. The flow should go into the port on the right side (based on the picture on this page) of the unit.
3. Once the unit is installed, turn the handle clockwise to close unit. Set the Indicator Sleeve to the preferred location to view the indicator reading. Set the Indicator to 0 based on the notch in the indicator sleeve.
4. Open the valve slightly prior to start up to ensure pressure does not build up.
5. Adjust the unit to the ideal operating setting. Once the unit is flowing at the current amount, tighten the thumb screw to ensure the stem position is locked into place.

Operation and Inspection:

1. The choke valve should be monitored to ensure proper function. If the valve is no longer performing as intended, try and readjust the stem location to the preferred operating conditions. If the unit no longer operating properly, it should be inspected for wear of the internal components.
2. Prior to performing any inspection of the unit, it should be isolated from the system and all pressure released. Then removed from the line.
3. If the unit is worn it is best to replace the entire unit.



Part Numbers

Item	Description	Item Number
1	Stem Nut	305179
2	Stem Washer	160001
3	Handle	112748
4	Indicator, ¾"	112763
	Indicator, ¾" Aluminum	112764
	Indicator, 1"	112765
	Indicator, 1" Aluminum	112766
5	Indicator Sleeve	120120
6	Indicator Sleeve Set Screw	119461
7	Thumb Screw	119465
8	Stem LOC Ball	417060
9	Lube Fitting	170002
10	Bonnet	090505
11	Back Up Ring, QTY: 2	119806
12	O-Ring, QTY: 2	
13	Stem, STD	120311
	Stem, AS/TC	120316
14	2M Body	120411
	Body, E30 Series	120511
15	Seat, ¾" STD	120108
	Seat, ¾" AS/TC	120113
	Seat, 1" STD	120114
	Seat, 1" AS/TC	120107

