

## Performance Style Packing

Packing is the most important component within the Performance Style Stuffing Boxes. This packing is engineered to perform in ever-changing well conditions, ensuring a constant seal of a rod lift well. Big Dome and Cone Packing are available in all polished rod sizes from 1" through 1 3/4" sets. Each Big Dome packing set consists of 3 domes. Each Cone packing set consists of 3 top cones and 1 bottom cone.

### Extended Life 800 Polymer Cone and Dome

- Hydrocarbon infused packing provides continuous lubrication. Chemical makeup is designed to be inert against H<sub>2</sub>S and CO<sub>2</sub>. Temperature range of -30°F to 250°F allows for increased performance in the winter.

### X-TRA Gold Cone

- Ideal for sweet crude oil production with high oil-to-water ratios, low sand content, and applications where salt or corrosion buildups on the polished rod have caused premature wear of other packing

### Kevlar Brass Cone

- Ideal for sweet crude oil production with high oil-to-water ratios. Specifically designed with reinforced sealing area for high abrasive fluids. Good in CO<sub>2</sub>, H<sub>2</sub>S, and steam applications



Cone Packing



Big Dome Packing

### Big Dome Packing

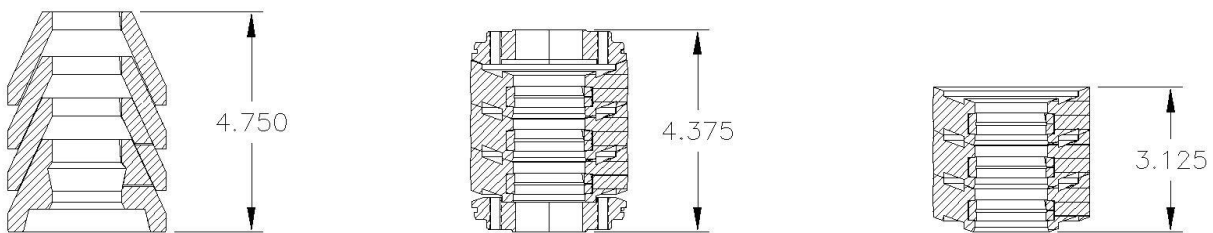
- A low coefficient of friction reduces drag and heat generation from the polished rod.
- Excellent chemical and wear resistance in most well conditions.
- Fits all WNS Lowery Cone Packing Stuffing Boxes with a one-time conversion kit.
- Available in Nitrile, HSN, or AFLAS® standard. Kevlar Brass and SR Silicone is available in special order

**NOTE:** This information is presented in good faith and for general purposes only. These specifications should not be used as the only determining factor for material selection. Each application is unique and must be addressed on an individual basis to determine the best material selection.

### Specifications

Name	ASTM Type	Max Service Temp. w/ H <sub>2</sub> S & CO <sub>2</sub> below 1%	Max Concentration limits of H <sub>2</sub> S	Max Concentration limits of CO <sub>2</sub>	Max Service Temp. w/ H <sub>2</sub> S & CO <sub>2</sub> at max concentration limits	Resistance to explosive decompression in CO <sub>2</sub> up to 20%	Performance in Steam Environments	Mechanical Tear & Abrasion resistance
Extended Life 800	Polymer	250°F 121°C	97+%	97+%	250°F 121°C	Not Rated	Not Rated	Excellent
X-TRA Gold	SBR	225°F 107°C	2%	NR	160°F 71°C	Not Rated	Fair	Excellent
Kevlar Brass	XNBR	500°F 260°C	10%	10%	325°F 162°C	Good	Good	Excellent
Nitrile Dome	NBR	250°F 121°C	2%	5%	150°F 65°C	Fair	Poor	Good
HSN Dome	HNBR	325°F 163°C	10%	10%	300°F 149°C	Excellent	Excellent to Good	Excellent
AFLAS® Dome	TFEP	450°F 232°C	35%	15%	350°F 177°C	Fair	Excellent	Fair

### Dimensions



	Cone	Big Dome w/ Bronze Rings	Big Dome w/o Bronze Rings
Height	4 3/4"	4 3/8"	3 1/8"
Approximate Weight	1.5 lb.	2.5 lb	0.5 lb

**NOTE:** This information is presented in good faith and for general purposes only. These specifications should not be used as the only determining factor for material selection. Each application is unique and must be addressed on an individual basis to determine the best material selection.